

WSG Series Water Pressure System Installation, Operation, and Maintenance

Installation: The pump is not waterproof, so installation must be in a dry location. If the installation location is more than 3-feet higher than the bottom of the supply tank, install CV-50 check valve (included) near the supply tank.

PST-1 Pressure Storage Tank may be located anywhere in the cold water plumbing AFTER the pump. PST-1 may be oriented vertically or horizontally, but allow for access to the cap for checking and adjusting the air charge.

Plumbing: Plumbing from the supply tank to the pump, and from the pump to PST-1 should be at least 1/2" ID reinforced hose. Plumbing after PST-1 may be reduced, but you should anticipate reduced flow with reduced plumbing size.

Electrical: WSG-1 12V requires a dedicated 30-amp circuit breaker; WSG-1 24V requires a dedicated 15-amp circuit breaker. Proper wire size is essential for efficient pump performance. Refer to the wire size selection chart (included). Connect positive (+) DC power lead to terminal block marked positive (+) and negative (-) DC power lead to terminal block marked negative (-). Use ring terminals for electrical connections.

Water Filters: Do not use charcoal water filters, as they will restrict flow to or from the pump and significantly reduce pump performance. You may use a coarse filter (GROCO WSB-500) at the pump inlet (if desired) to filter supply tank debris.

Start-up: Double-check plumbing connections. Pour a small amount of water into the inlet hose to aid in initial prime. Open all faucets and showers and apply power. When the pump primes and a smooth water flow comes from each outlet, shut it off. When all outlets are closed, the pump will fill the water heater and PST-1 tank (this may take a few minutes) and shut off at 38-40 PSI. Check once again for leaks.

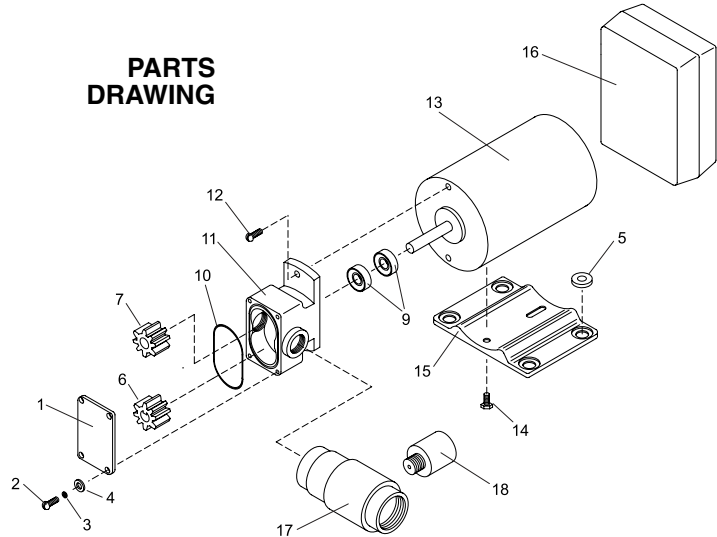
Dry-Tank Shut Down: WSG is equipped with ETM shut down timer. Normally, WSG will "cycle" on and off during operation, even if you are continuously drawing water. If the pump ever runs continuously for ten minutes the timer will shut the pump off. If this occurs, the timer must be reset (it will not restart automatically).



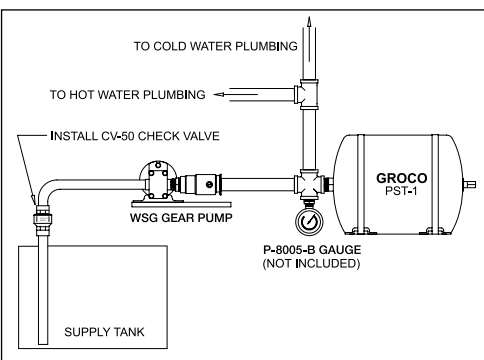
To reset, turn off power at the circuit breaker for 15 seconds, and then turn on – the pump will restart. Follow start-up procedure to purge air.

Note: If nuisance WSG shut-downs are frequent, WSG may be undersized for your boat, or a larger PST may be required.

PARTS DRAWING



WSG SAMPLE INSTALLATION



Item	Part Number	Part Name	Qty	Service Kit
1	GP-1-C	COVER	1	
2	1032X12HS	SCREW	4	
3	10SS	LOCKWASHER	6	
4	10S	FLAT WASHER	6	
5	B-200-G	GROMMETS SET (4)	1	
6	GPK-09-0938	GEAR, KEYED	1	
7	GP-09-0938	GEAR	1	
9	031-075-8	SEAL	2	*
10	2-029	O-RING	1	*
11	GP-1-375B	HOUSING	1	
12	1032X58HS	SCREW	2	
13	(VOLTAGE)-F	MOTOR	1	
14	1032X12HST	SCREW	2	
15	B-200-P	BASE	1	
16	ETM	DRY TANK SHUTDOWN MODULE	1	
17	P-9021-A	CHECK VALVE	1	
18	IPS-38	PRESSURE SWITCH	1	
NS	PST-1	PRESSURE STORAGE TANK	1	
	P-9	SERVICE KIT		*