

# VD Series Vertical Duplex Strainers

## Installation, Operation, and Maintenance

**Location:** Install VD series strainers in a location that allows for 180-degree handle rotation and for filter basket service. Use brackets on the valve body and on the end caps to mount to a sturdy bulkhead or stringer.

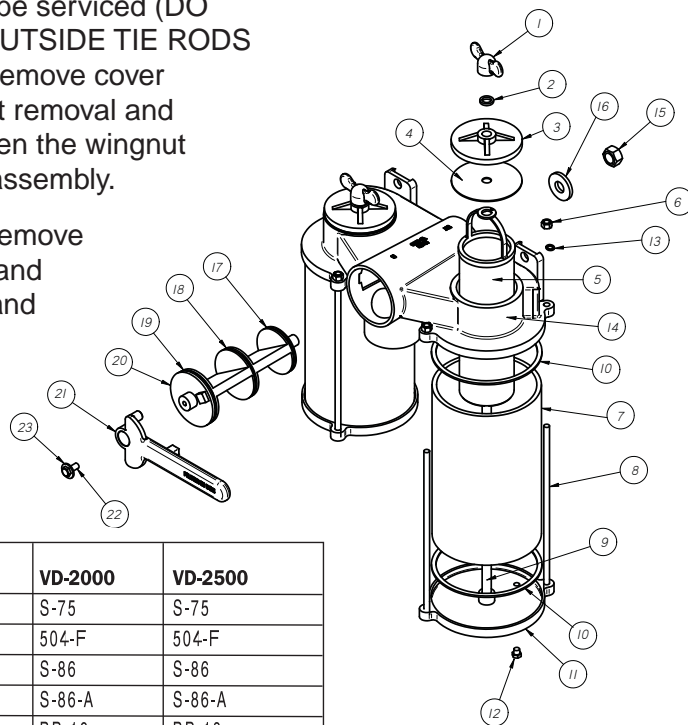
**Plumbing:** Observe Inlet and Outlet markings on the valve body. Ports are threaded for NPT connections. Use threaded pipe or bronze Pipe/Hose adaptors such as GROCO PTH, PTHC, PTHD, FF or FFC series for hose connections.

**Bonding:** Connect the strainer to the vessel bonding system with 14 AWG or larger stranded copper wire. Use a ring connector to fasten beneath any of the outside tie rod nuts. DO NOT make the strainer bonding connection in series with motorized equipment. Motorized equipment must have a separate ground, per ABYC, E-11, Figure-18.

**Operation:** The valve plug directs raw water flow to one filter chamber, as indicated by the valve handle; the unused chamber can be serviced. To redirect raw water flow rotate the valve handle to its full stop position.

**Maintenance:** Only the filter chamber that is not in use may be serviced. Spin off the wingnut of the filter chamber to be serviced (DO NOT LOOSEN OUTSIDE TIE RODS HARDWARE). Remove cover casting for basket removal and inspection. Tighten the wingnut securely after reassembly.

**Winterization:** Remove both drain plugs and disconnect inlet and outlet hoses to drain the valve body and both filter chambers.



For finer filtration various mesh options are offered. GROCO's standard fine mesh option is 60-mesh. To order, specify 60 after the basket number (ie: BM-1860). Other mesh options are available. Call 410 604-3800 for details.

Item	Included In Service Kit	Description	Qty	VD-1000	VD-1250	VD-1500	VD-2000	VD-2500
1		Wingnut	2	SVS-5	SVS-5	S-75	S-75	S-75
2	*	Washer	2	500-K	500-K	504-F	504-F	504-F
3		Cover	2	S-751	S-751	S-86	S-86	S-86
4	*	Gasket	2	S-751-A	S-751-A	S-86-A	S-86-A	S-86-A
5		Basket, poly	1	BP-3	BP-5	BP-6	BP-16	BP-18
		Basket, #304 SS	1	BS-3	BS-5	BS-6	BS-16	BS-18
		Basket, Monel	1	BM-3	BM-5	BM-6	BM-16	BM-18
6		Hex Nut	4	1420HS	1420HS	51618HS	51618HS	51618HS
7		Sight Glass, clear	1	S-77	S-77-A	S-88	S-88-A	S-88-B
		Enclosure, #316 SS	1	AS-77	AS-77-A	AS-88	AS-88-A	AS-88-B
8		Tie Rod, outside	4	S-73-X	S-73-B	S-82-B	S-82-C	S-82-D
9		Tie Rod, center	2	S-73-D	S-73-E	S-82-E	S-82-F	S-82-G
10	*	Gasket	4	#8R Set	#8R Set	#10R Set	#10R Set	#10R Set
11		End Cap	2	S-73-A	S-73-A	S-82-AB	S-82-AB	S-82-AB
12		Drain Plug	2	1827HB	1827HB	1827HB	1827HB	1827HB
13		Washer	4	14SS	14SS	516SS	516SS	516SS
14		Valve body	1	Not Sold Separately	Not Sold Separately	Not Sold Separately	Not Sold Separately	Not Sold Separately
15		Hex Nut	1	1220HB	1220HB	5818HB	5818HB	5818HB
16		Washer	1	VD-A	VD-A	VD-B	VD-B	VD-B
17	*	O-Ring	1	2-218	2-218	2-229	2-229	2-240
18	*	O-Ring	1	-	-	2-231	2-231	2-236
19	*	O-Ring	1	2-222	2-222	2-234	2-234	2-234
20		Valve Plug	1	Not Sold Separately	Not Sold Separately	Not Sold Separately	Not Sold Separately	Not Sold Separately
21		Handle	1	-	-	VD-2502	VD-2502	VD-2502-A
22		Bolt	1	-	-	51618X34HB	51618X34HB	51618X34HB
23		Washer	1	-	-	24L	24L	24L
14-23		Body/Plug Assy	1	VD-1000 BPA	VD-1250 BPA	VD-1500 BPA	VD-2000 BPA	VD-2500 BPA
*		Service Kit		VD-1	VD-1	VD-2	VD-2	VD-3