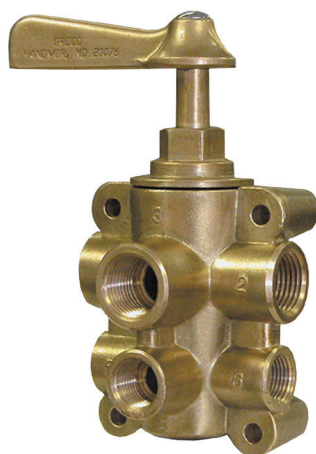


Installation, Operation and Maintenance Instructions for 6-Port Fuel Valves

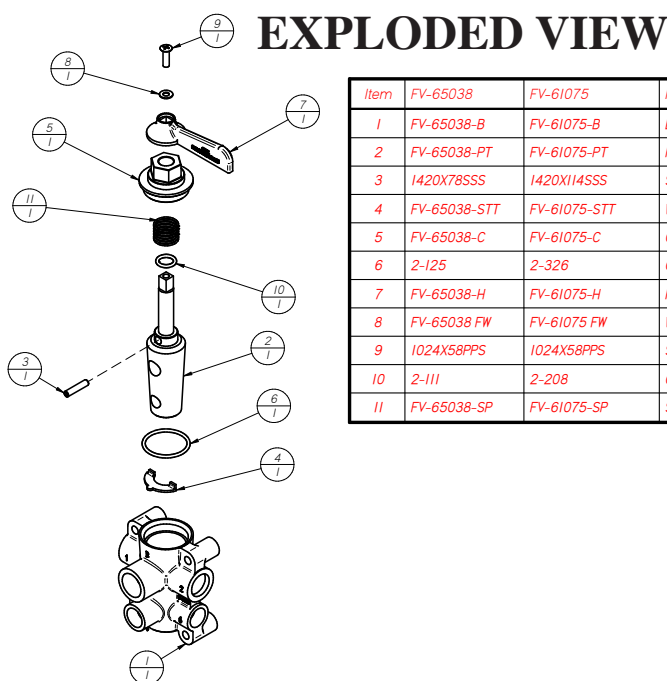
GROCO®

Models: FV-65038, FV-65038-A, FV-61075 and FV-61075-A



6-Port Fuel Valve

Models
FV-65038,
FV-65038-A,
FV-61075 and
FV-61075-A



Item	FV-65038	FV-61075	Name	QTY	COMMENT
1	FV-65038-B	FV-61075-B	BODY	1	NOT SOLD
2	FV-65038-PT	FV-61075-PT	PLUG	1	NOT SOLD
3	1420X78SS	1420X114SS	SET SCREW	1	
4	FV-65038-STT	FV-61075-STT	WASHER	1	
5	FV-65038-C	FV-61075-C	CAP	1	
6	2-125	2-326	O-RING	1	
7	FV-65038-H	FV-61075-H	HANDLE	1	
8	FV-65038-FW	FV-61075-FW	WASHER	1	
9	1024X58PPS	1024X58PPS	SCREW	1	
10	2-111	2-208	O-RING	1	
11	FV-65038-SP	FV-61075-SP	SPRING	1	

INSTALLATION, OPERATION AND MAINTENANCE

Concept: FV-series tapered plug valves are intended for use in diesel fuel systems where an engine can draw fuel from two supply tanks; unused fuel is returned to the supply tank.

Installation:

Install **FV-65038** with four bronze or stainless steel screws, 1/4" x 1-1/2", or with an installer-made bracket.

Install **FV-61075** with four bronze or stainless steel screws, 5/16" x 1-3/4", or with an installer-made bracket.

CAUTION: The valve handle can be repositioned in 90-degree increments. The flow patterns shown at right are not accurate if the valve handle is repositioned.

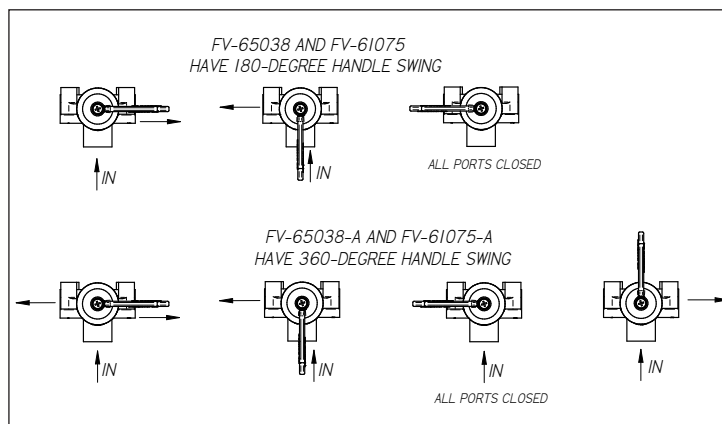
Plumbing: Fuel lines between the valve and the supply tanks must be braided hydraulic-type hoses with swaged NPT swivel connectors.

All ports are NPT thread.

FV-65038 – ports 1, 2 and 3 are 1/2"; ports 4, 5 and 6 are 3/8".

FV-61075 – ports 1, 2 and 3 are 1"; ports 4, 5 and 6 are 3/4".

Operation: Turn the valve handle to the position indicated below to achieve the flow pattern shown.



Maintenance: Regular Maintenance: Inspect threaded connections and hoses monthly for signs of leakage or deterioration.

Annual Maintenance: Refer to the exploded view drawing. Remove cap and valve plug to inspect O-Rings for wear. Replace if necessary. To keep the valve plug turning freely, lubricate the plug before re-assembly with silicon grease or GROCO ULube-3. Screw the cap onto the body securely – check for leaks.