

# EB Series Toilet

## Installation, Operation, and Maintenance

**Operation:** Flush water is pumped into and out of the model EB toilet by actuating the operating arm at the right side of the toilet. This may be done manually by pumping the handle back and forth, or electrically by depressing the momentary switch. The flow of water into the bowl is controlled by stepping on or off the footpedal on the left side of the toilet.

**Winterization:** Freezing water will damage the toilet. Winterize the unit by draining all water from the toilet base by removing the two drain plugs on the front of the base. Loosen the connecting plumbing to drain water from hose or pipe connections to and from the toilet.

**Maintenance Checks:**

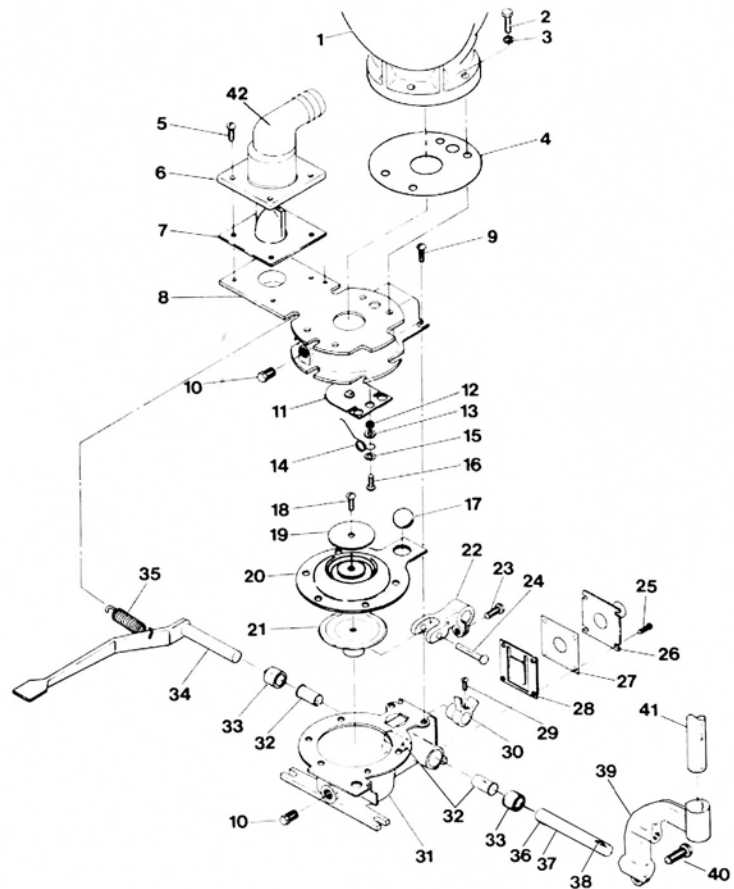
- When released, footpedal HT-3570-A should “spring” up off the floor. This action automatically closes the inlet gasket. Replace S-72587 if necessary.
- Looking into the bowl, flap HT-26-A should sit tight against the underside of the base casting. Replace HT-84-A and HT-26-A if necessary.
- There should be no noticeable play in arm HT-3560-B. If there is play it is probably due to wear in the keyways of the pump shaft. We recommend replacement of HT-6566 every five (5) years, or when excessive play is detected.
- When the footpedal is released and it springs up, the flow of water from the rim of the bowl should cease (except for the small amount of water still inside the rim).

If water continues to flow into the bowl, replace HT-3557 and HT-3557-A gaskets. When replacing HT-3557 the gasket hinge is to be at the top and the bronze weight facing the toilet. Verify that cam HT-3559 strikes the bronze weight when the footpedal is up, but allows the gasket to swing open when the footpedal is depressed.

**Notes:**

- 4978 bowl is NLA, replacement must be 4985.
- When bowl is replaced, 500-D Seat & Cover must be ordered.
- TT-50 Seat & Cover is NLA.
- If the bowl is replaced on EB toilets equipped with an electric drive, arm HT-3560-E must be ordered to replace HT-3560-B.

Item	Part Number	Part Name	Qty	Master Kit	Comment
1	4985-0	Bowl, white	1		
	4985-1	Bowl, bone			
	4985-2	Bowl, gray			
2	51618X134HB	Bolt	4		replcd with 51618X134HS
3	20L SET	Washer Set	4	*	
4	HT-52-A	Gasket	1		
5	1420X34RB	Screw	4		replcd with 1420X34HS
6	HT-11	Bracket	1		
7	H-27	Joker Valve	1	*	
8	HT-3551	Casting	1		NLA
9	1420X12RB	Screw	7		
10	1827HB	Drain Plug	2		
11-12	HT-26-A	Gasket Assy	1	*	
13-16	HT-84-A	Spring Assy	1	*	
17	HT-56	Ball	1	*	
18-20	HT-3554-A	Diaphragm Assy	1	*	
21-24	HT-3558-A	Yoke Assy	1		
25	1024X12HB	Screw	4		
26	HT-3556	Inlet	1		
27	HT-3557-A	Gasket	1	*	
28	HT-3557	Gasket	1	*	
29-30	HT-3559	Cam	1		
31	HT-3552-A	Casting	1		NLA
32	HT-3563-A	Bearing	3	*	
33	HT-3564	Seal	2	*	
34	HT-3570-A	Footpedal	1		
35	S-72587	Spring	1		
36-38	HT-6566	Shaft	1		
36, 38	KS	Key Set	1		
39-40	HT-3560-E	Arm	1		
41	HT-3560-C	Handle	1		
42	HA-1	Elbow	1		Requires HT-11
NS	500-D-0	Seat & Cover, white	1		
	500-D-1	Seat & Cover, bone			
	500-D-2	Seat & Cover, gray			
<b>Note</b>	<b>EB Regular Kit</b>				<b>NLA</b>



© 1999 GROCO MECHANICAL LABORATORIES, INC. ALL RIGHTS RESERVED.