

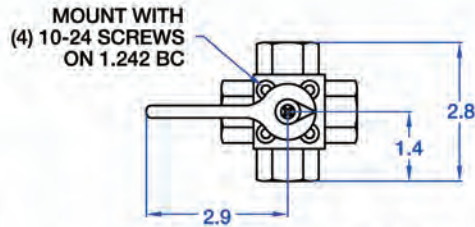
# 450 SERIES

## TANK SELECTOR VALVE

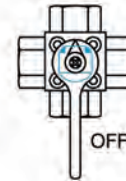
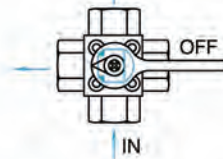
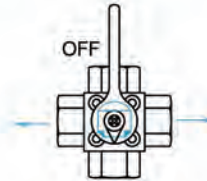
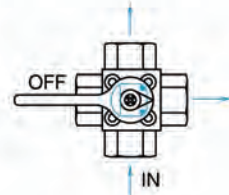
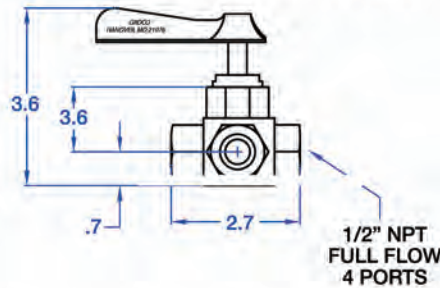


**FV-450-X  
TANK SELECTOR  
VALVE**

- Available separately or as part of kit (see below TS-350-T)
- For fuel or water.
- Four Positions: Tank-1, Tank-2, Tanks 1 & 2, Off.
- Full 1/2" flow.
- Audible "click" at each handle position.
- For thru panel mounting.



HANDLE MAY BE POSITIONED  
IN 90-DEGREE INCREMENTS  
AUDIBLE CLICK AT EACH POSITION



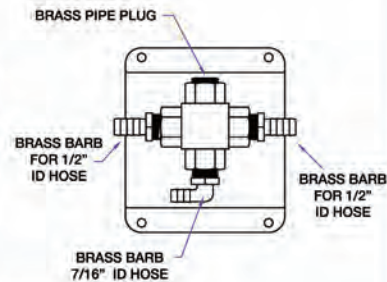
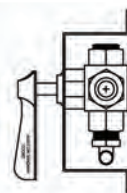
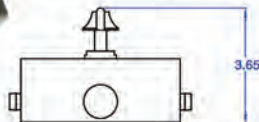
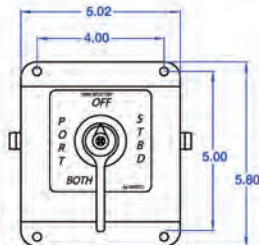
**TS-350-T**

**TANK  
SELECTOR  
KIT**

TS-350-T Tank Selector Kit utilizes FV-450-X full flow valve (see above for details) mounted on an attractive stainless steel mount bracket and plumbed with two (2) 1/2" hose barbs and one (1) 7/16" hose barb.

Kit provides two covers designed to match your installation (port/starboard tanks or fore/aft tanks).

Handle can be relocated in 90-degree increments to align plumbing.



HANDLE MAY BE POSITIONED  
IN 90-DEGREE INCREMENTS  
AUDIBLE CLICK AT EACH POSITION

**GROCO**