

BVS Series - Seacock/Strainer Combination

Installation, Operation, and Maintenance

Installation: Thread the seacock portion onto an appropriately sized bronze thru-hull fitting. You may need to cut down the length of the thru-hull so that it does not bottom out inside the seacock before proper compression of the hull and backing block has been achieved.

Use marine grade caulking between the seacock flange and the backing block, and between the thru-hull fitting flange and the hull.

Orient the seacock so as to provide un-obstructed access to the seacock handle, assuring that full 90-degree movement of the handle is possible. (To simplify plumbing hook-up the strainer head may be rotated in 90-degree increments after the seacock has been secured).

Bolt the seacock securely to the backing block with stainless steel bolts.

Connect the seacock to the boat's bonding system with 14-gauge wire and a ring connector. A bonding screw bolt is provided on the seacock flange for this purpose.

The BVS model number identifies the NPT pipe size that the strainer head is threaded (for example, BVS-750 means the strainer outlet is 3/4" NPT).

Select a pipe-to-hose adaptor that matches the threaded strainer head and that also matches the hose size you will use to plumb the rest of the system. Full flow and standard flow, straight and 90-degree fittings are available. (See attached information sheet).

Apply TFE thread tape to threaded NPT connections, and double-clip all hose connections.

Seacock Operation: Rotate the handle to the mechanical stop in the vertical position to open the seacock. Rotate the handle to the mechanical stop in the horizontal position to close the seacock.

The square hole in the handle (after 011001) is for use with a ratchet handle, and is for the purpose of easing valve activation.

Strainer Operation: Unscrew the threaded strainer cap to inspect or service the filter basket. Although hand-tight is sufficient for a good O-ring seal, the cap has three (3) holes for the use of GROCO SW-2531 spanner wrench if additional tightening is desired, or if the cap is difficult to break loose after an extended time.

Maintenance: Inspect and clean the filter basket frequently. Apply silicon based or Teflon based waterproof grease to the strainer cap threads and O-ring to ease loosening the cap for the next inspection.

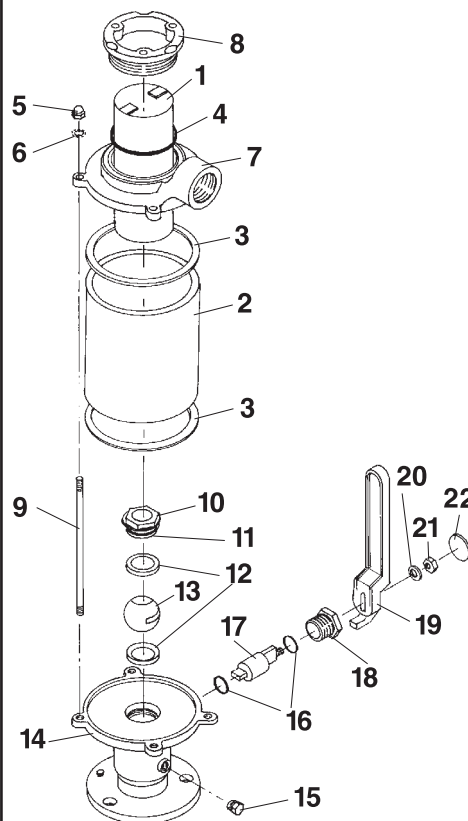
BVS is designed for in-field serviceability. If replacement of internal valve parts is ever required, the valve lock nut located at the bottom of the strainer (top of the valve) may be removable by first removing the set screws that prevent it from turning. Once the set screws have been removed, access to the valve ball and seats is possible.

Lubricate the threads and O-ring with silicon or Teflon grease before re-assembly.

The stem seals are accessible by removing the handle and unscrewing the brass nut. Pull the stem straight out for access to the stem seals.



| ITEM | PART NAME | QTY | BVS-750 | BVS-1000 | BVS-1250 | BVS-1500 |
|------|---------------------------------|-----|--------------------|--------------------|--------------------|--------------------|
| 1 | Filter Basket, Stainless Steel | 1 | SSS-754 | SSS-1004 | SSS-1254 | SSS-1504 |
| | Filter Basket, Monel (optional) | 1 | SS-754 | SS-1004 | SS-1254 | SS-1504 |
| 2 | Sight Glass | 1 | S-70-A | SVS-1006 | SVS-1257 | S-88 |
| • 3 | Gasket | 2 | #9R | #8R | #8R | #10R |
| • 4 | O-Ring | 1 | 2-144 | 2-151 | 2-151 | 2-238 |
| 5 | Cap Nut | 4 | 1420CS | 1420CS | 1420CS | 1420CS |
| 6 | Lockwasher | 4 | 14SS | 14SS | 14SS | 14SS |
| 7 | Strainer Top | 1 | SS-751 | SS-1001 | SS-1251 | SS-1501 |
| 8 | Strainer Cap | 1 | SS-502-B | SS-1002-B | SS-1002-B | ARG-1501-B |
| 9 | Tie Rod | 4 | S-73-C | SVS-1009 | SVS-1259 | S-73-B |
| 10 | Valve Lock Nut | 1 | BVS-752 | BVS-1002 | BVS-1252 | BVS-1502 |
| 11 | O-Ring | 1 | 2-122 | 2-127 | 2-135 | 2-140 |
| 12 | Ball Seat | 2 | BV-756 | BV-1006 | BV-1256 | BV-1506 |
| 13 | Ball | 1 | BV-754 | BV-1004 | BV-1254 | BV-1504 |
| 14 | Valve Body | 1 | BVS-750-B | BVS-1000-B | BVS-1250-B | BVS-1500-B |
| 15 | Drain Plug | 2 | 1827HB | 1827HB | 1827HB | 1827HB |
| • 16 | Driver Seal | 2 | 1-015 | 1-017 | 1-017 | 1-116 |
| 17 | Driver | 1 | BVS-751-A | BVS-1001-A | BVS-1251-A | BVS-1501-A |
| 18 | Driver Nut | 1 | BV-503-A | BV-1003-A | BV-1003-A | BV-1503-A |
| 19 | Handle | 1 | BV-508 | BV-1008 | BV-1008 | BV-1508 |
| 20 | Washer | 1 | 14FS | 14FS | 14FS | 38FS |
| 21 | Lock Nut | 1 | 1228X38HS and 14SS | 1420X12HS and 14SS | 1420X12HS and 14SS | 3816X15HS and 38SS |
| 22 | Cap | 1 | PFW-10 | PFW-11 | PFW-11 | PFW-12 |
| • | Service Kit | | BVS-1 | BVS-2 | BVS-2 | BVS-3 |



© 1999 GROCO MECHANICAL LABORATORIES, INC. ALL RIGHTS RESERVED.